

BOCA WINDS - PARCEL D-2

A PART OF THE BAY WINDS PLANNED UNIT DEVELOPMENT
A PARCEL OF LAND LYING IN SECTION 27, TOWNSHIP 47 SOUTH, RANGE 41 EAST,
SAID PARCEL ALSO BEING A REPLAT OF A PORTION OF TRACTS 5, 9, 10, 11, 12, 13, 14 AND 15,
FLORIDA FRUITLANDS COMPANY'S SUBDIVISION NO. 2, AS RECORDED IN PLAT BOOK 1,
PAGE 102, PUBLIC RECORDS OF PALM BEACH COUNTY, FLORIDA.
SHEET 3 OF 4 OCTOBER, 1993

201-010

THERE SHALL BE NO CONSTRUCTION, INCLUDING LANDSCAPING
IN ANY PORTION OF THE LAKE MAINTENANCE EASEMENT

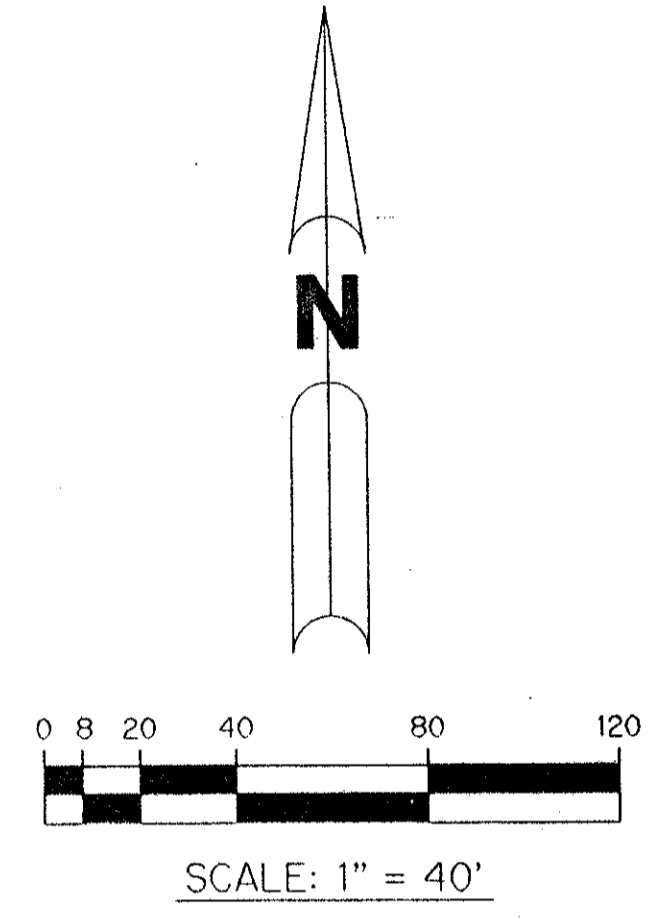
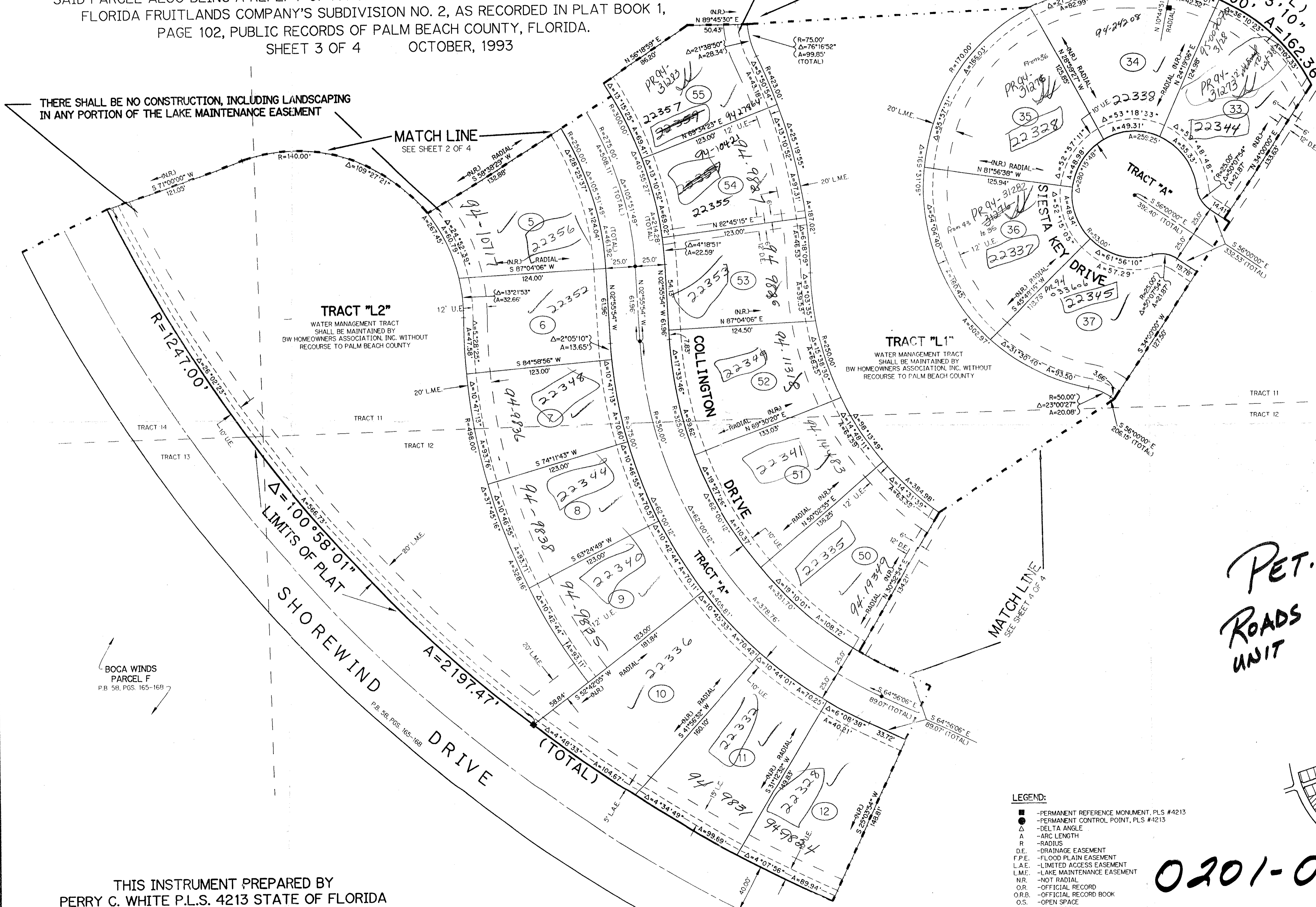
LIMITS OF PLAT

BOCA WINDS
PARCEL D-1
P.B. 60, PGS. 60-64

MATCH LINE
SEE SHEET 2 OF 4

THERE SHALL BE NO CONSTRUCTION, INCLUDING LANDSCAPING
IN ANY PORTION OF THE LAKE MAINTENANCE EASEMENT

MATCH LINE
SEE SHEET 2 OF 4



PET. 80-47
ROADS
UNIT
\$1139.00 PER

SUBDIVISION *BOCA WINDS, PARCEL D-2
BOOK 72
PAGE 61
FLOOD ZONE A0-1
QUAD #69
SE 80-47
ZIP CODE 33418
PUD NAME BAY WINDS 33433

THIS INSTRUMENT PREPARED BY
PERRY C. WHITE P.L.S. 4213 STATE OF FLORIDA
LAWSON, NOBLE AND ASSOCIATES, INC.
ENGINEERS PLANNERS SURVEYORS
WEST PALM BEACH, FLORIDA

- LEGEND:
- - PERMANENT REFERENCE MONUMENT, PLS #4213
 - - PERMANENT CONTROL POINT, PLS #4213
 - Δ - DELTA ANGLE
 - A - ARC LENGTH
 - R - RADIUS
 - D.E. - DRAINAGE EASEMENT
 - F.P.E. - FLOOD PLAIN EASEMENT
 - L.A.E. - LIMITED ACCESS EASEMENT
 - L.M.E. - LAKE MAINTENANCE EASEMENT
 - N.R. - NOT RADIAL
 - O.R. - OFFICIAL RECORD
 - O.R.B. - OFFICIAL RECORD BOOK
 - O.S. - OPEN SPACE
 - P.B. - PLAT BOOK
 - PGS. - PAGES
 - P.L.S. - PROFESSIONAL LAND SURVEYOR
 - S.T. - SURVEY TIE LINE
 - U.E. - UTILITY EASEMENT
 - L.M.E. - LAKE MAINTENANCE ACCESS EASEMENT
 - L.A.E. - LIMITED ACCESS EASEMENT



0201-010
KEYMAP
N.T.S.

72/01

BOCA WINDS - PARCEL D-2